

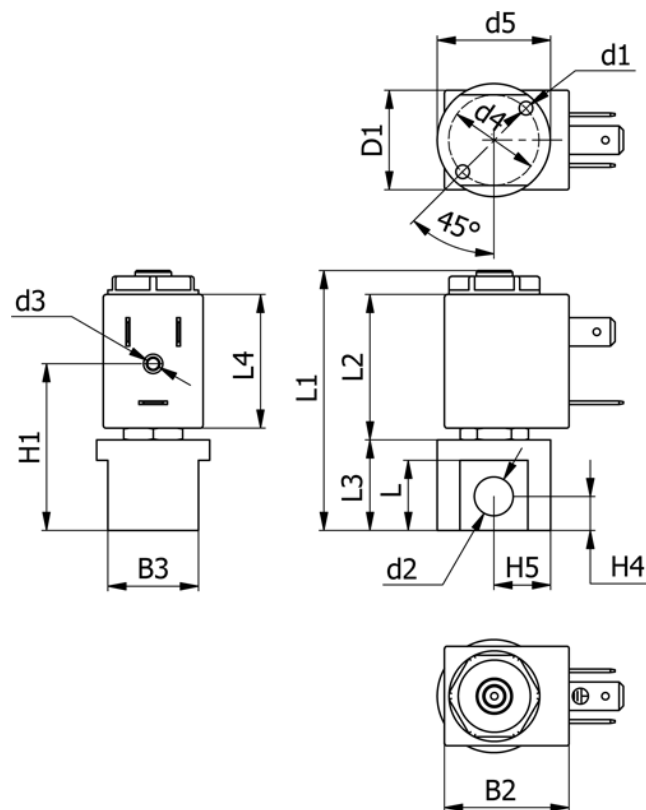
# Data Sheet



Article number: 588N2B616XT0471

Description: Solenoid valve type N2B616.XT0.471 2/2 NC  
24 VDC orifice 1,6 housing in Stainless AISI 316 Inlet port G1/8"

## Measures



B2 = 29	Flow = 1.1	L4 = 29.5
B3 = 20	H1 = 38.1	Orifice = 1.6
d1 = M4x10	H4 = 7.5	Valve function = 2/2 NC
D1 = 22	H5 = 12.5	Voltage = 24 VDC
d2 = G1/8"	L = 15.5	
d3 = M3x4	L1 = 57.7	
d4 = $\varnothing$ 19	L2 = 32.1	
d5 = $\varnothing$ 25	L3 = 21.5	